

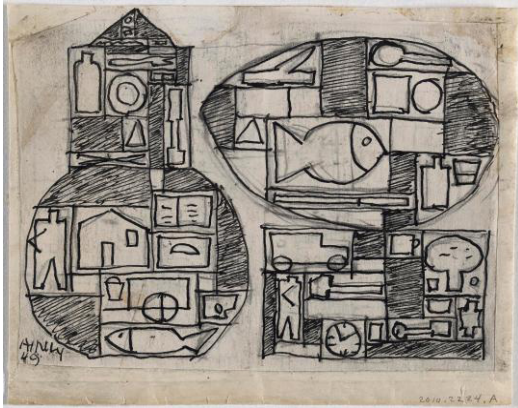
Exploring Shapes and Making Collaborative Drawings

This lesson will guide you on how to collaborate with a family member to create a set of ink drawings inspired by this Julio Alpuy drawing.

Time: 30 minutes–1 hour

Difficulty level: Easy

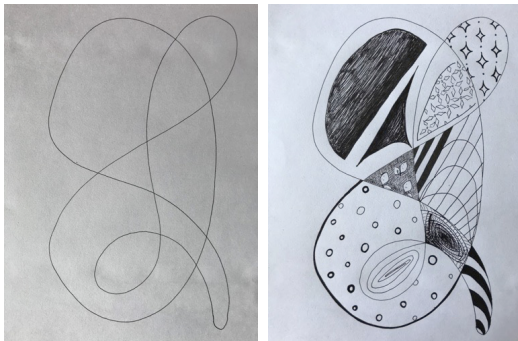
Messy level: Low



Investigate the Work of Art!

1. What shapes and objects do you recognize in this drawing?
2. What is the difference between a line and a shape?
3. Collaboration means working with someone to produce or create something together. When was a time you collaborated with someone else? What did you create?

To view a hi-res image of the work, visit the [MFAH Collection online database](#).



Let's Make Some Art!

Gather These Art Materials

- Two pieces of white drawing paper
- Two black pens

Step-by-Step Artist Instructions

1. Find a hard surface where you and your collaborator can both sit and draw. During this process, you and your partner will be exchanging drawings back and forth.
2. Both partners begin with a piece of paper. Never lifting your pen, create one large winding shape. Make sure to end at the same point where you began.
3. Look at how many shapes have been created within the drawing.
4. Now switch papers.
5. Both participants will do the next step simultaneously.
6. Pick one shape and fill it in with simple patterns, recognizable objects like Alpuy did, or fill in the spaces completely with shading, images, or patterns.
7. Once you each have finished, switch papers, pick a shape, and fill it in.
8. Continue this process until all shapes are filled.

Note: If you have a child who gets upset about making "mistakes," use pencils instead of ink.

Family Programs at the Museum of Fine Arts, Houston, receive generous support from the Junior League of Houston, Inc.

Learning and Interpretation programs receive generous funding from the Jerold B. Katz Foundation; Institute of Museum and Library Services; H-E-B; MD Anderson Cancer Center; Sharon G. Dies; Sterling-Turner Foundation; Houston Junior Woman's Club; Houston Livestock Show and Rodeo; Samuel H. Kress Foundation; The Brown Foundation, Inc.; Susan Vaughan Foundation; and additional generous donors.

Julio Alpuy, *Sin título (Dos estructuras) (Untitled [Two structures])*, 1949, graphite and ink on paper, the Museum of Fine Arts, Houston, gift of the estate of the artist, 2010.2224.A.B.
© Artists Rights Society (ARS), New York / AGADU, Uruguay