

Sicardi

Ayers

Bacino

**John Sparagana**

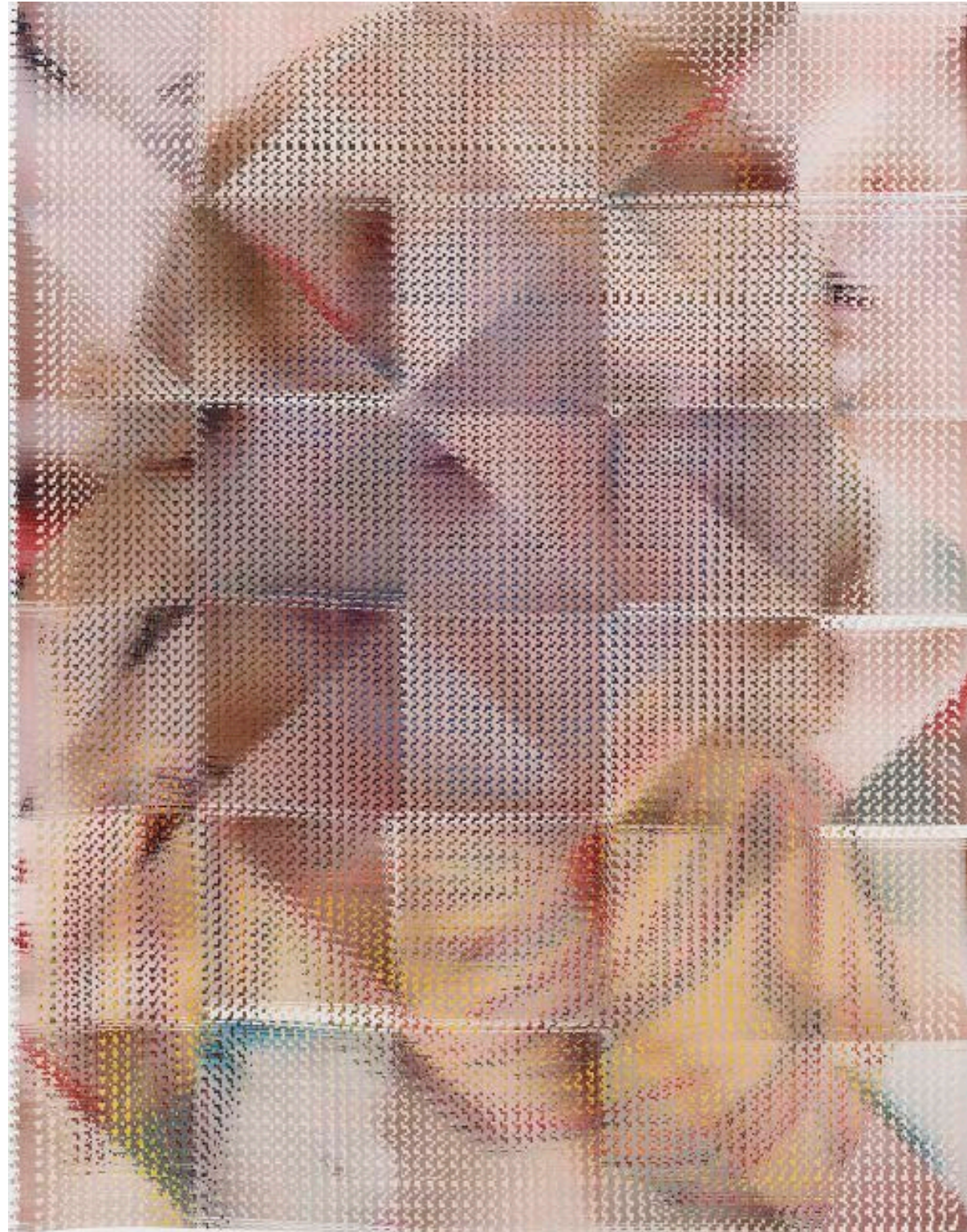
***Splendid Isolation (Forces at Work)***

January 28 - March 3, 2022

**Sicardi | Ayers | Bacino**

John Sparagana

*Splendid Isolation (Forces at Work)*

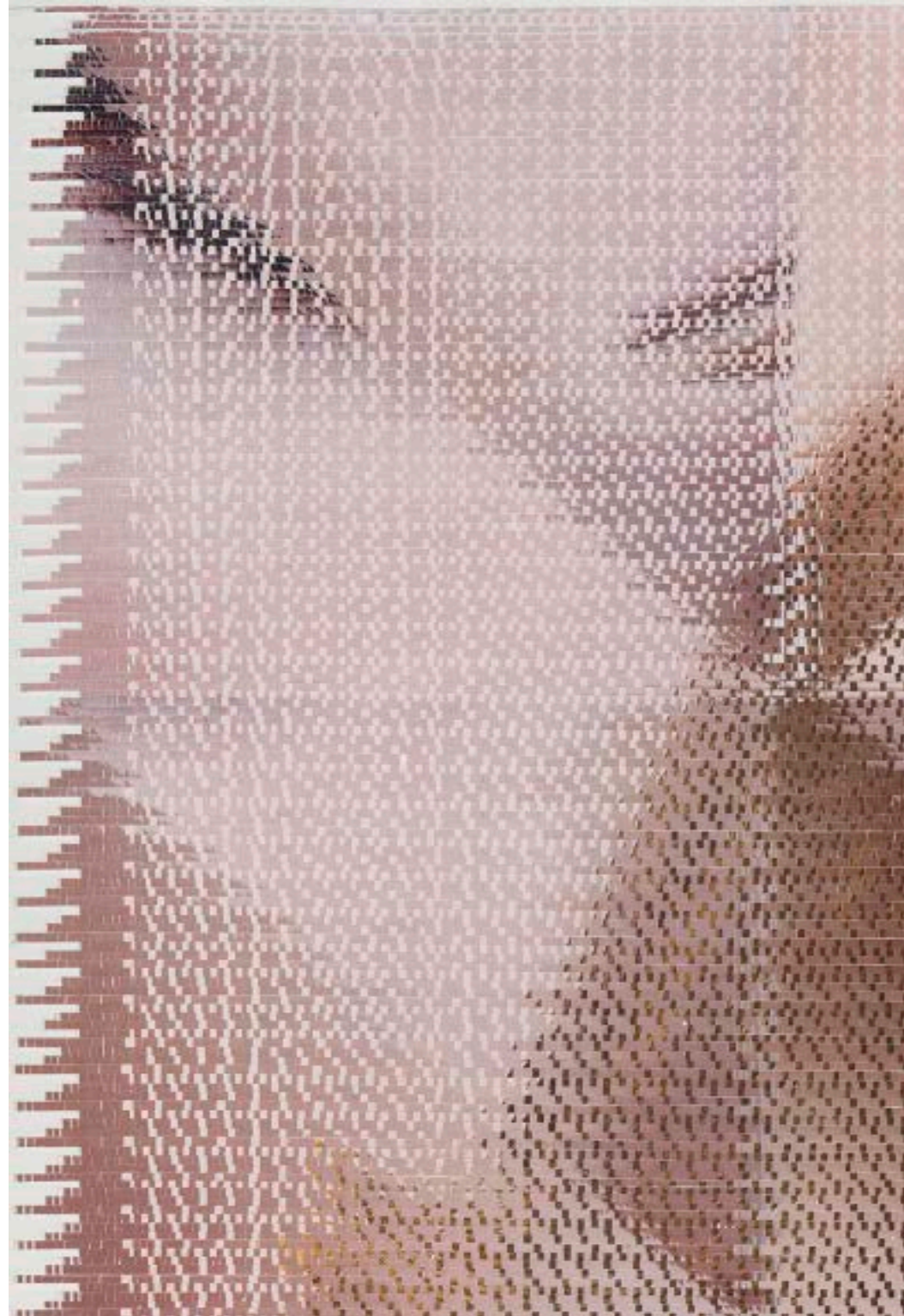


*Self Portrait in Dub, #11, 2019*  
Archival inkjet prints, sliced and mixed on paper  
89 1/2 x 70 1/2 x 1 1/2 in.

**Sicardi | Ayers | Bacino**

John Sparagana

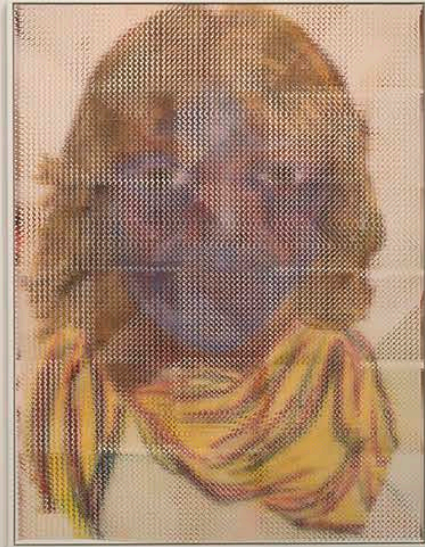
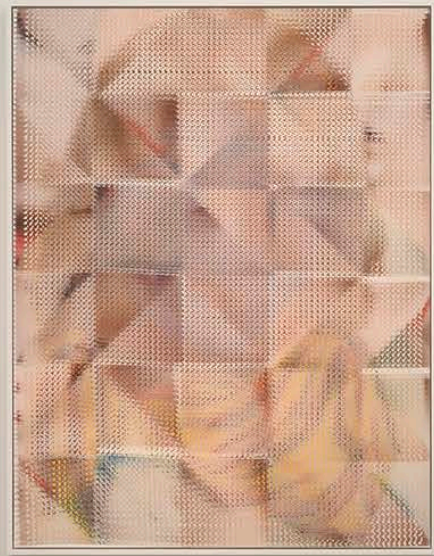
*Splendid Isolation (Forces at Work)*



*(detail)*

*“At the core of John Sparagana’s practice since 2007 have been his sliced and mixed collages, based on a painstaking technique of his devising often deployed at a scale that places these works in dialogue with painting – whether those of his contemporaries or paintings from different phases of his own career. The sliced and mixed collages draw from sources as disparate as politically resonant magazine photojournalism; color comics in hues redolent of the mid-twentieth century; glossy, high-production images from fashion and advertising; canonical works of modernist painting; and Sparagana’s own paintings and drawings whether of current vintage or reaching back to his teenage years in the 1970s.”*

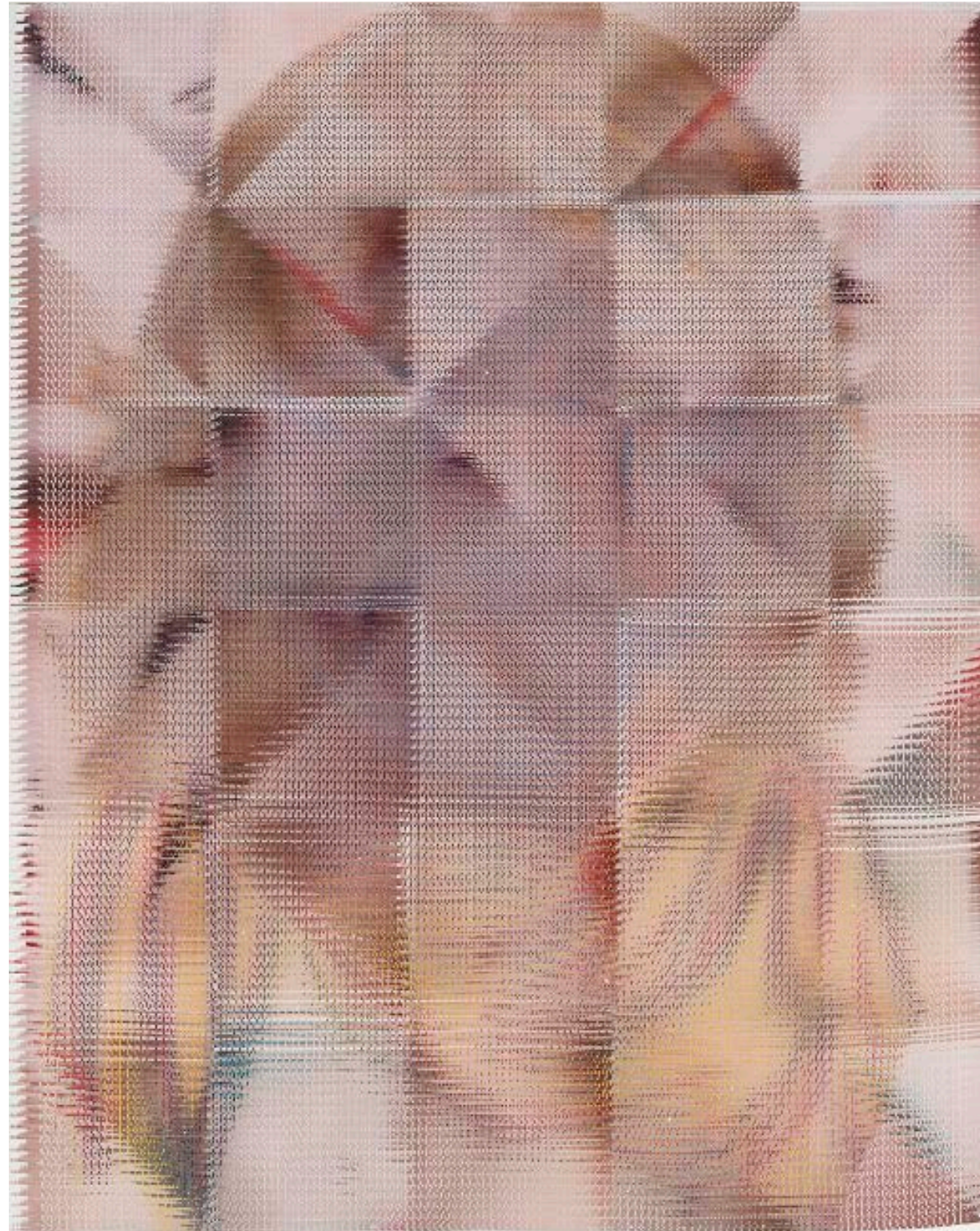
*- David Grubbs*



**Sicardi | Ayers | Bacino**

John Sparagana

*Splendid Isolation (Forces at Work)*

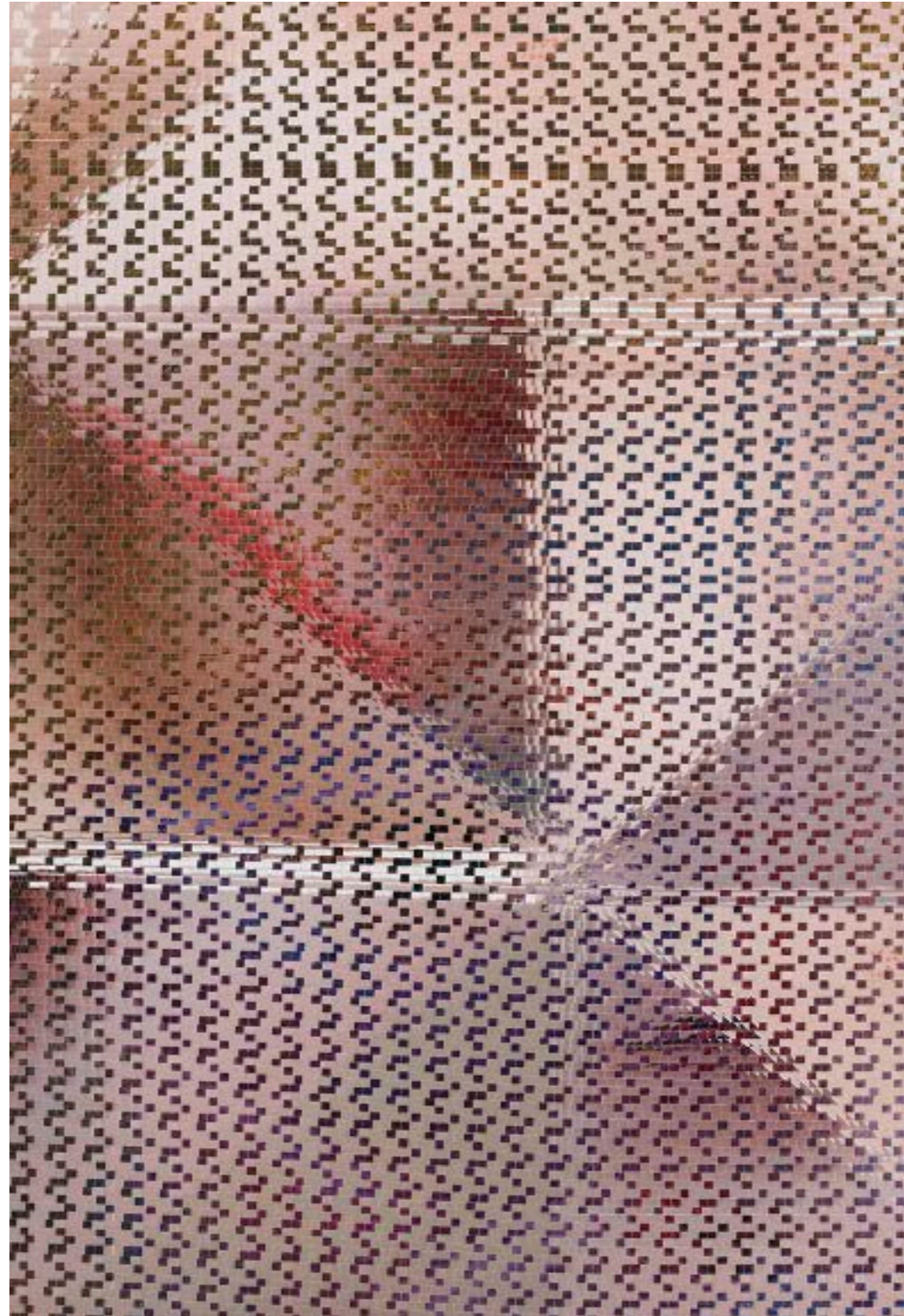


*Self Portrait in Dub, #2, 2019*  
Archival inkjet prints, sliced and mixed on paper  
52 x 40 3/4 x 1 1/2 in.

**Sicardi | Ayers | Bacino**

John Sparagana

*Splendid Isolation (Forces at Work)*



*(detail)*

**Sicardi | Ayers | Bacino**

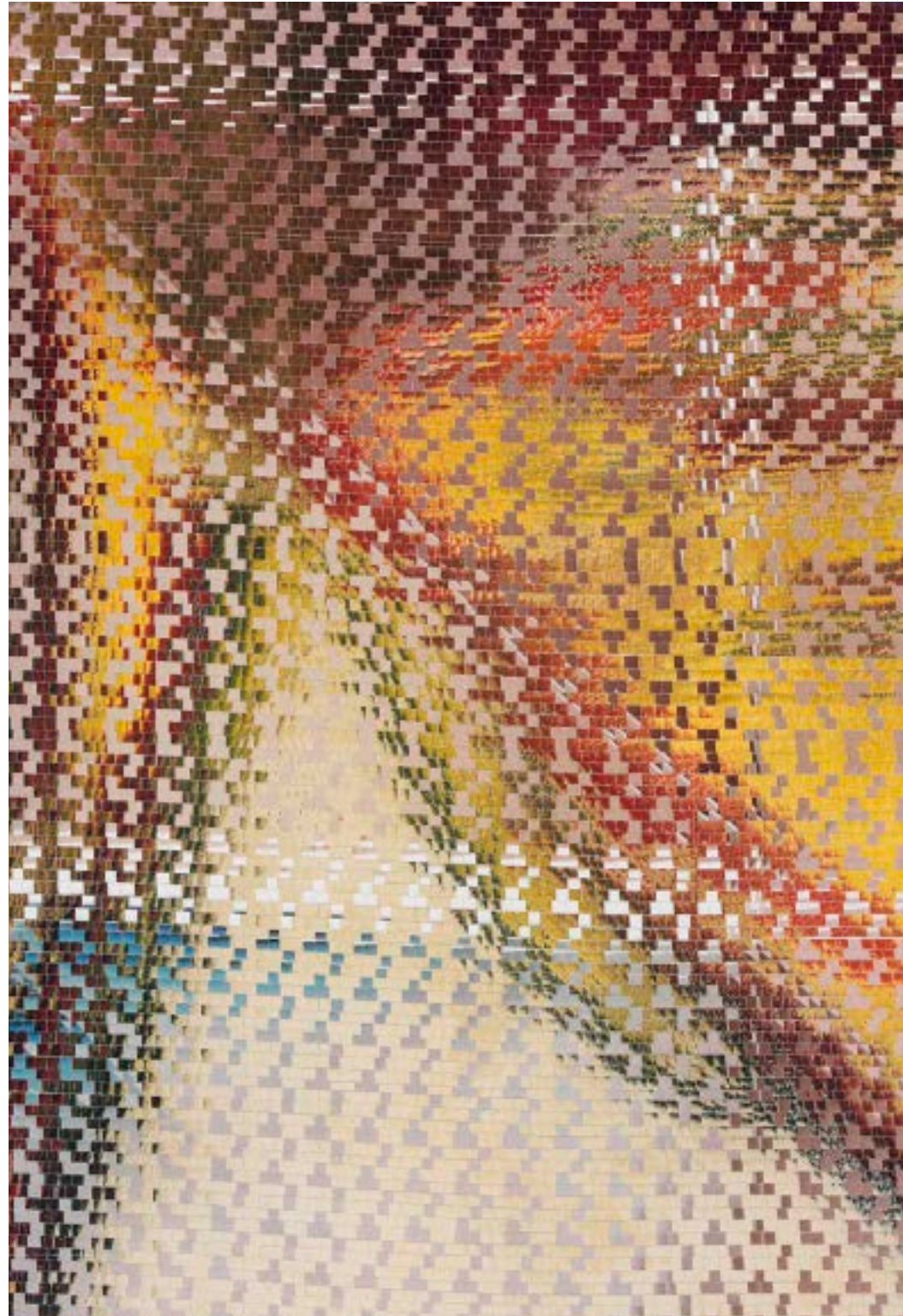
John Sparagana

*Splendid Isolation (Forces at Work)*



*Self Portrait in Dub, #1, 2019*  
Archival inkjet prints, sliced and mixed on paper  
52 1/2 x 40 1/8 x 1 1/2 in.





*(detail)*

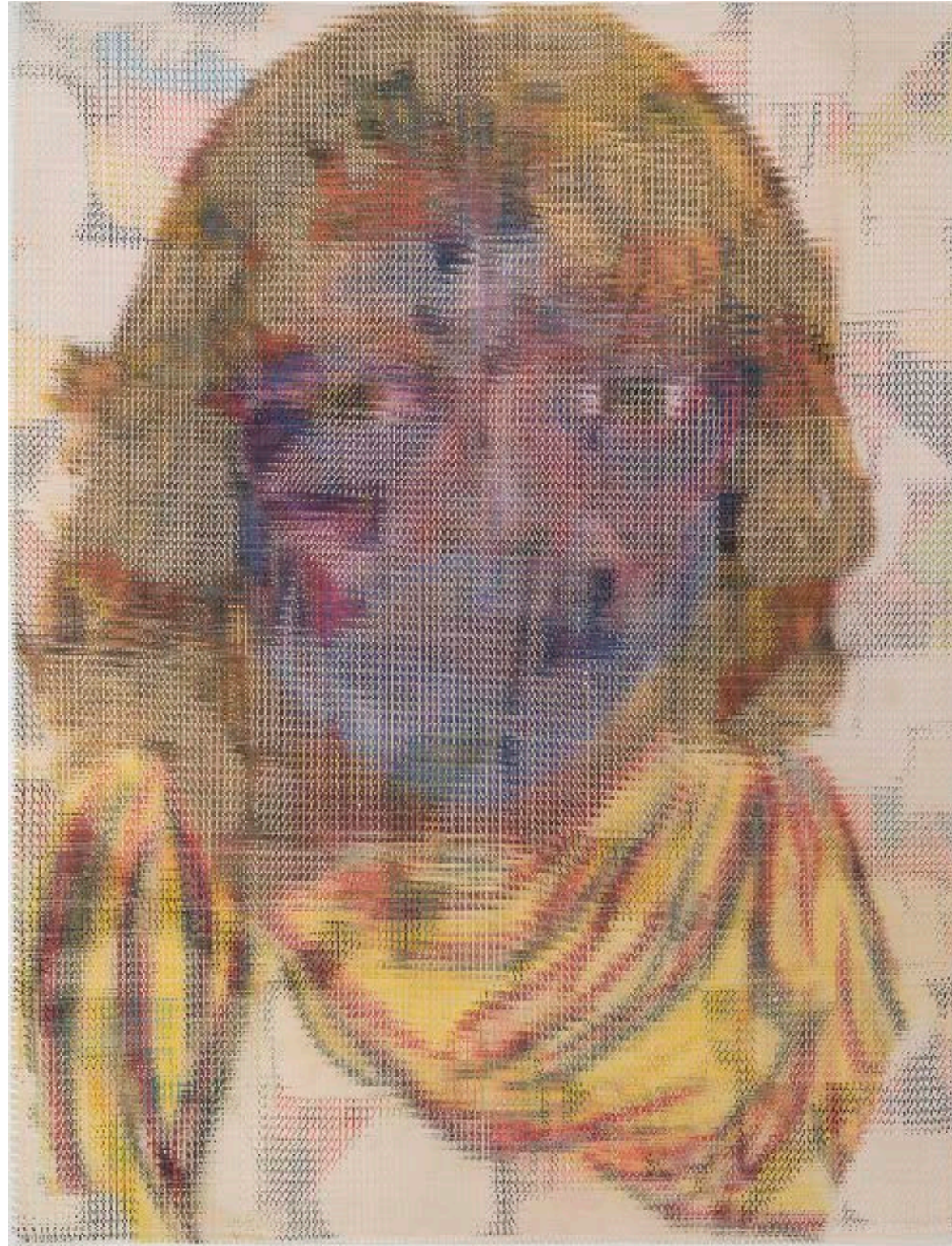
*“The four self-portraits (two at a monumental scale) in the exhibition are from Sparagana’s series collectively titled, Self Portrait in Dub. In 2018, after his sister’s passing, Sparagana discovered among her possessions three different self-portrait images that he had made in the mid-1970s while she spent time hanging out – she was eighteen months older and already had a place of her own –and when drawing and painting were still shared pursuits. When Sparagana began slicing and mixing multiple reproductions of these self-portraits with recent completed work—first with pieces from his Industry White in Dub series, and then his Dick Tracy and Themesong Variations series—not only was he making two seemingly irreconcilable systems coexist within the same work, but he was collapsing four decades, making 2018-19 and 1975-76 simultaneously present.”*

*- David Grubbs*

**Sicardi | Ayers | Bacino**

John Sparagana

*Splendid Isolation (Forces at Work)*



*Self Portrait in Dub, #12, 2019*  
Archival inkjet prints, sliced and mixed on paper  
95 1/2 x 71 3/4 x 1 1/2 in.

**Sicardi | Ayers | Bacino**

John Sparagana

*Splendid Isolation (Forces at Work)*

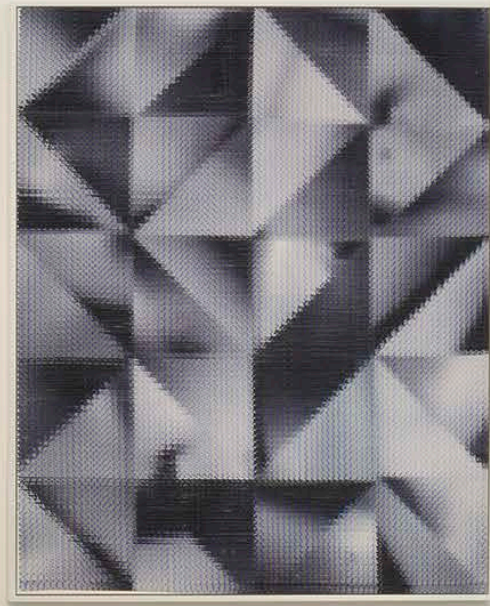
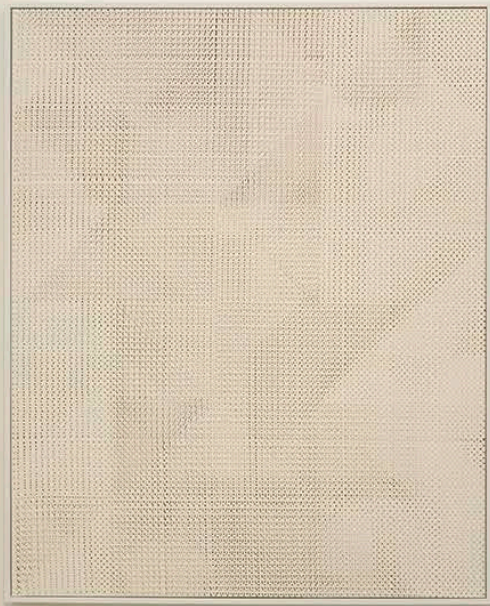


*(detail)*



*“The death of my sister was sudden and unexpected; shattering. The membrane between the present and the past – the ethos that my sister and I had shared early on – became entirely permeable for a period of time. It was the emotional catalyst for the series, and I felt illuminated by the structural possibilities of the series”*

*- John Sparagana*



*“The resolute abstractions in John Sparagana’s Splendid Isolation (Forces at Work): Summer/Fall/Winter 2020 series result in a hall of mirrors as their structuring image, a kind of diagonal mirroring or near-mirroring, a folding in on itself of the image field, executed in increments, the field dog-eared, origamied, and paper-airplaned, a series of creases (slits, crevices, holes) creating a grid of potential volumes, implied volumes, spaces, like rooms along an empty hallway.”*

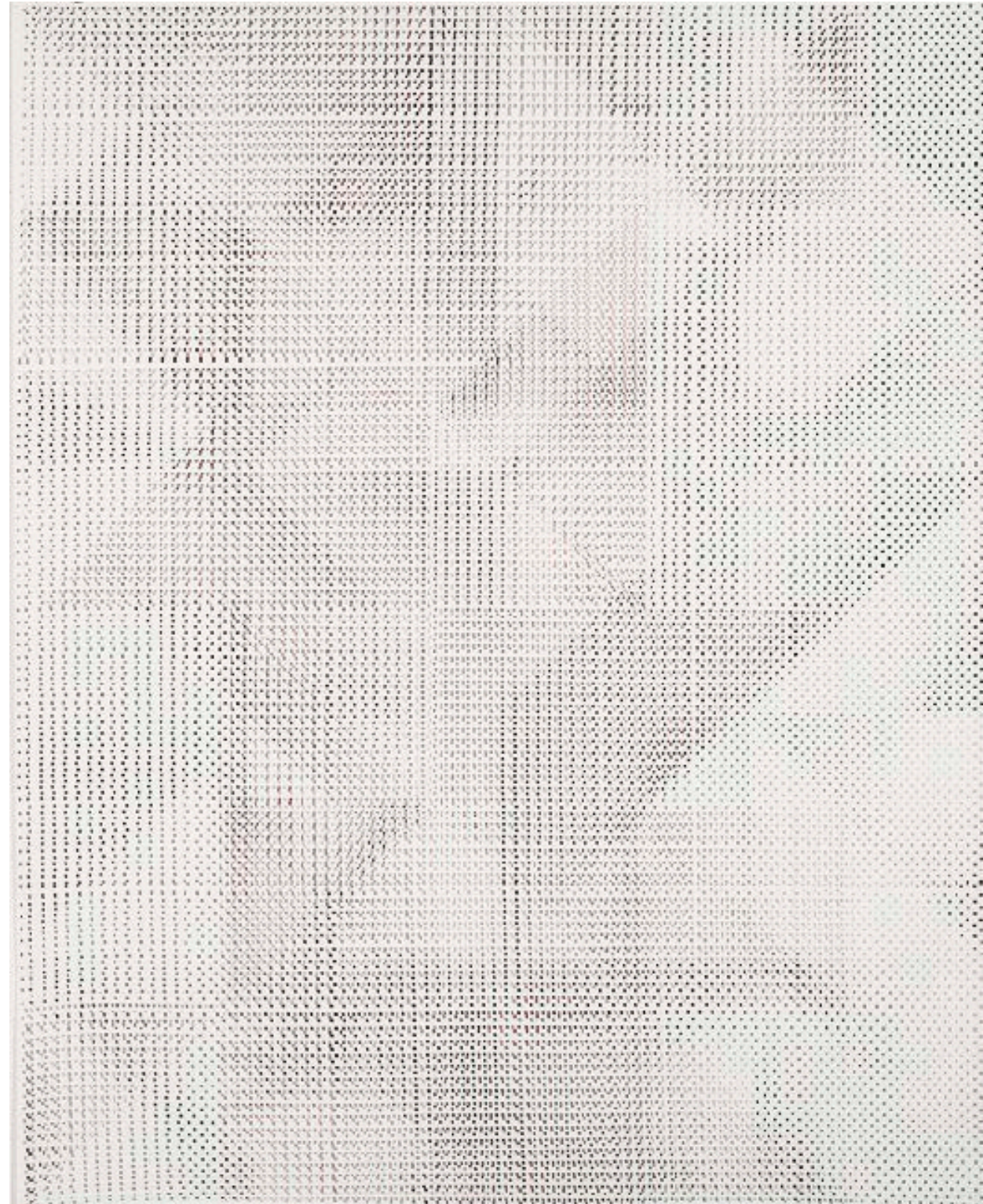
*- John Corbett*



**Sicardi | Ayers | Bacino**

John Sparagana

*Splendid Isolation (Forces at Work)*

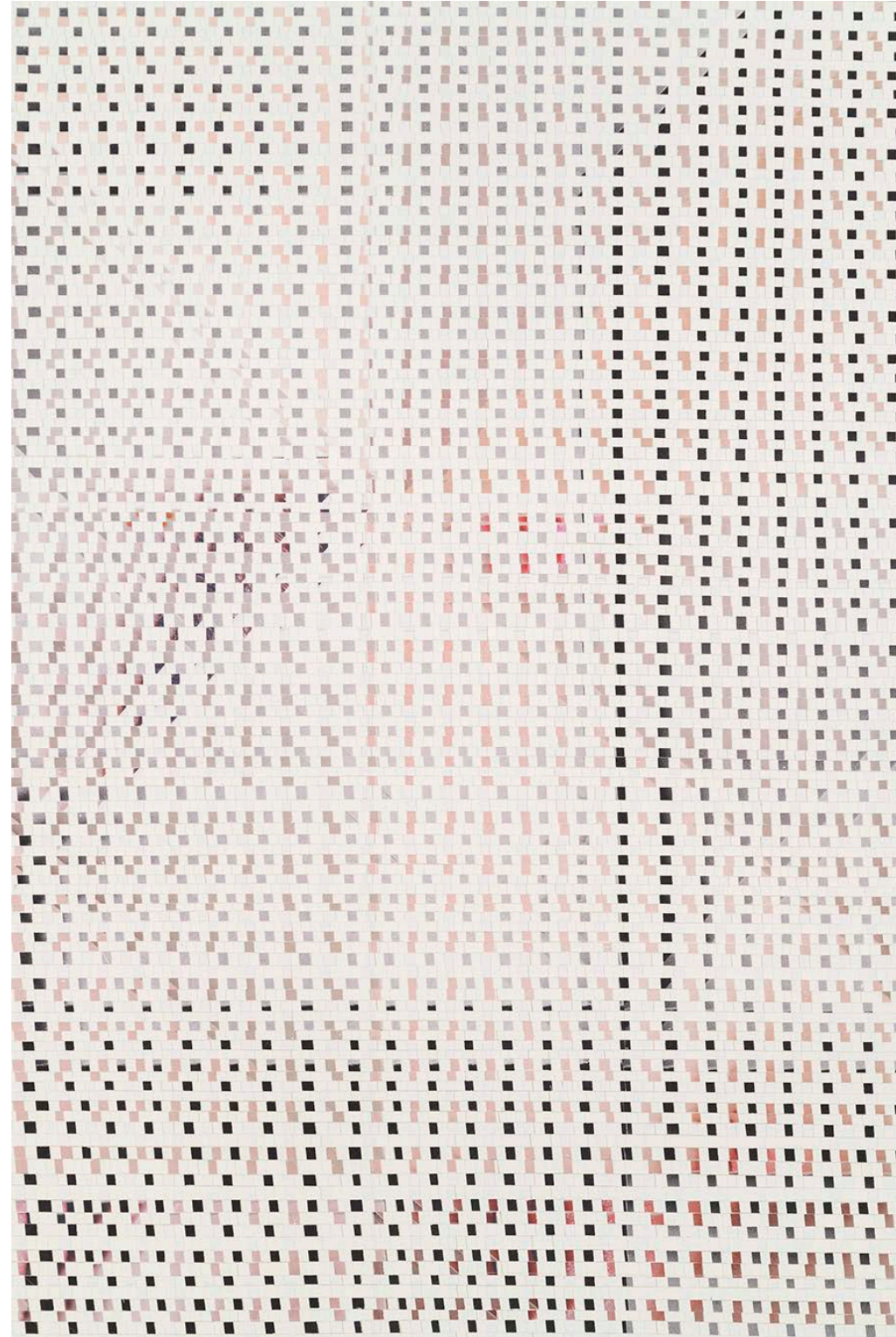


*Splendid Isolation (Forces at Work)*  
*Summer/Fall/Winter 2020 #26, 2020*  
Sliced and mixed printed matter on paper  
55 3/4 x 45 1/4 in.

**Sicardi | Ayers | Bacino**

John Sparagana

*Splendid Isolation (Forces at Work)*



*(detail)*

**Sicardi | Ayers | Bacino**

John Sparagana

*Splendid Isolation (Forces at Work)*

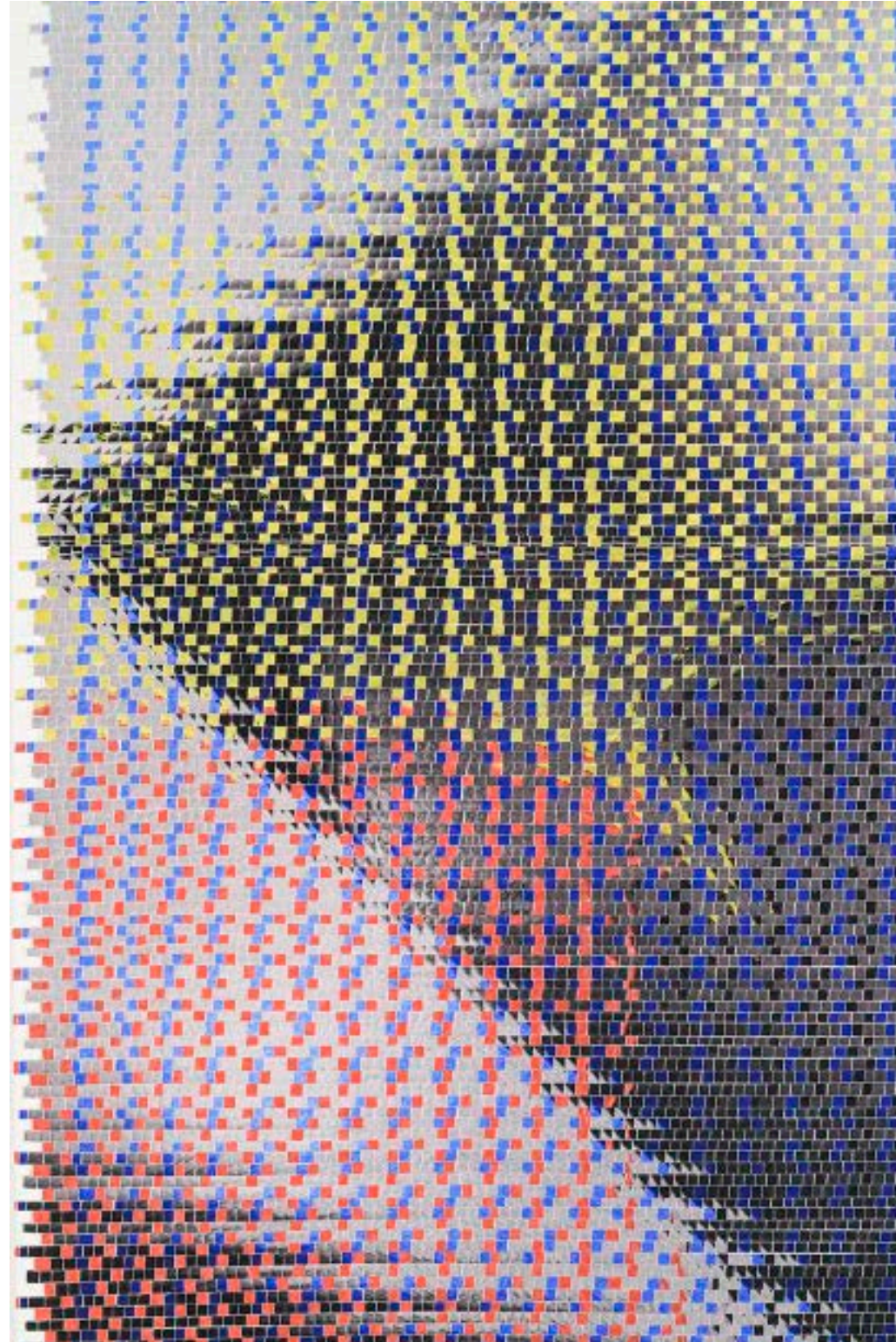


*Splendid Isolation (Forces at Work)*  
*Summer/Fall/Winter 2020 #27, 2020*  
Sliced and mixed printed matter on paper  
55 1/2 x 45 3/8 in.

**Sicardi | Ayers | Bacino**

John Sparagana

*Splendid Isolation (Forces at Work)*

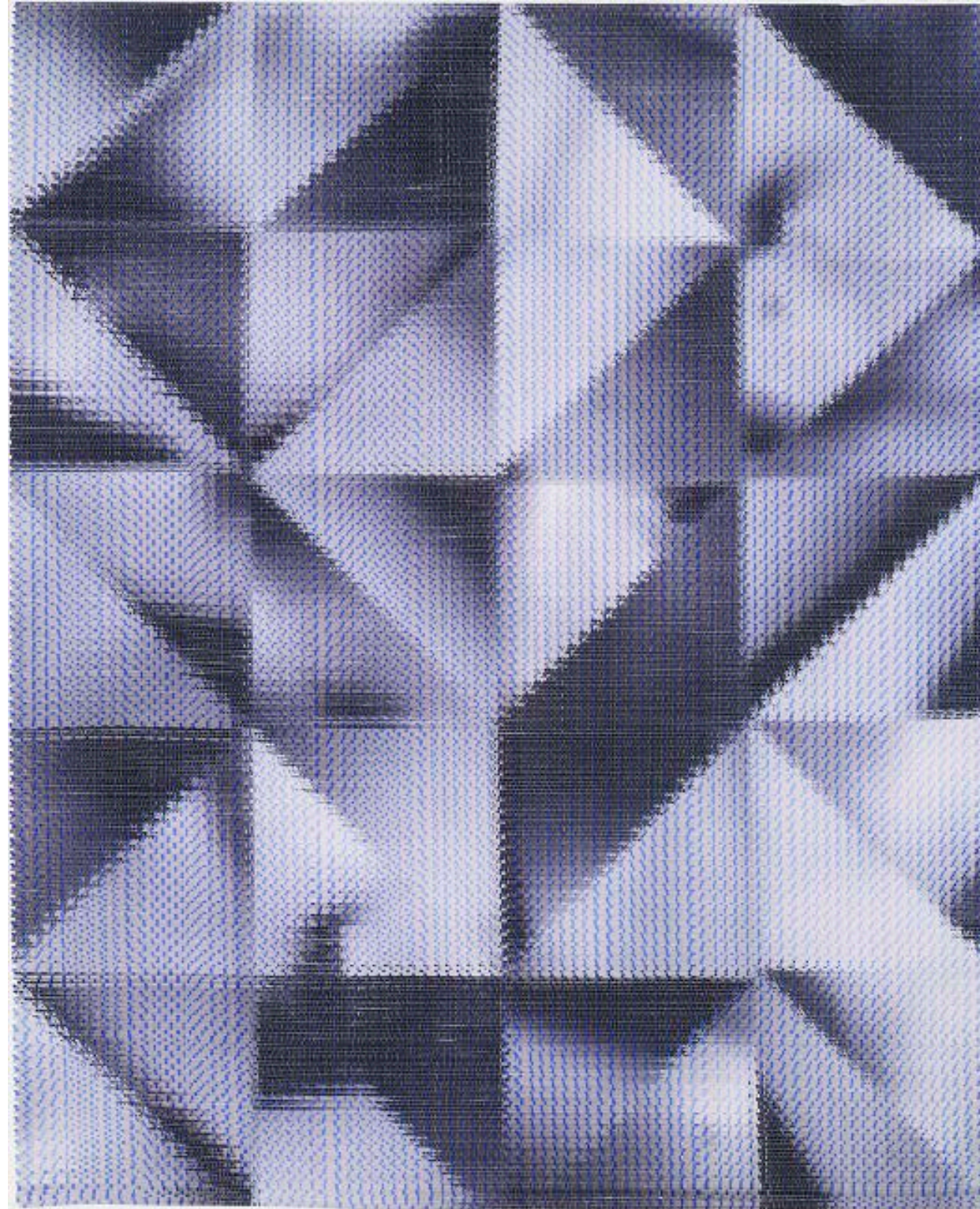


*(detail)*

**Sicardi | Ayers | Bacino**

John Sparagana

*Splendid Isolation (Forces at Work)*

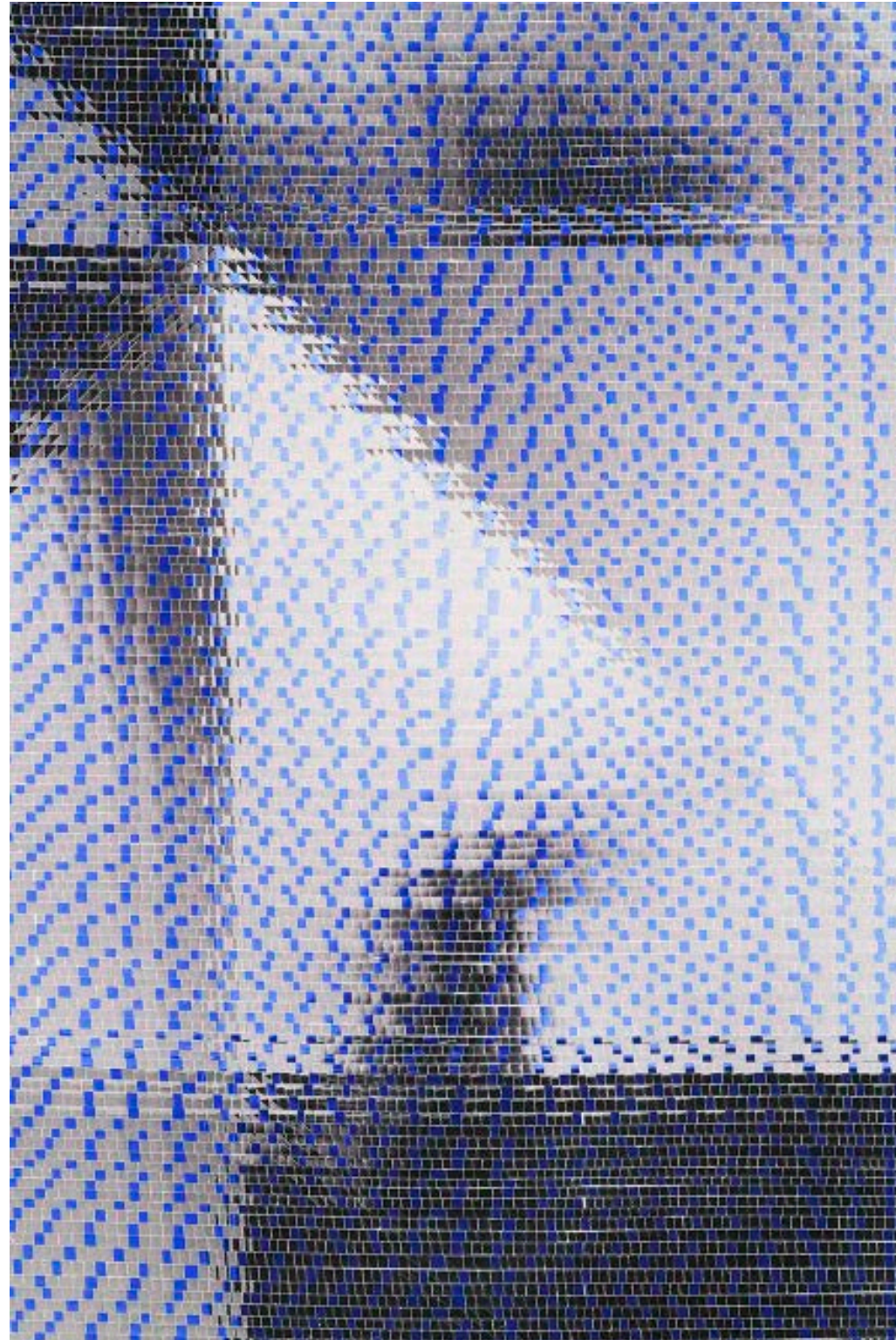


*Splendid Isolation (Forces at Work)*  
*Summer/Fall/Winter 2020 #23, 2020*  
Sliced and mixed printed matter on paper  
55 5/8 x 45 1/4 in.

**Sicardi | Ayers | Bacino**

John Sparagana

*Splendid Isolation (Forces at Work)*



*(detail)*

*“All created during the pandemic, Splendid Isolation’s dub iterations arguably convey something of the combination of intimacy and alienation particular to their time, that uncomfortable mix of openness and claustrophobia that the virus imposed on virtually everyone.”*

*- John Corbett*

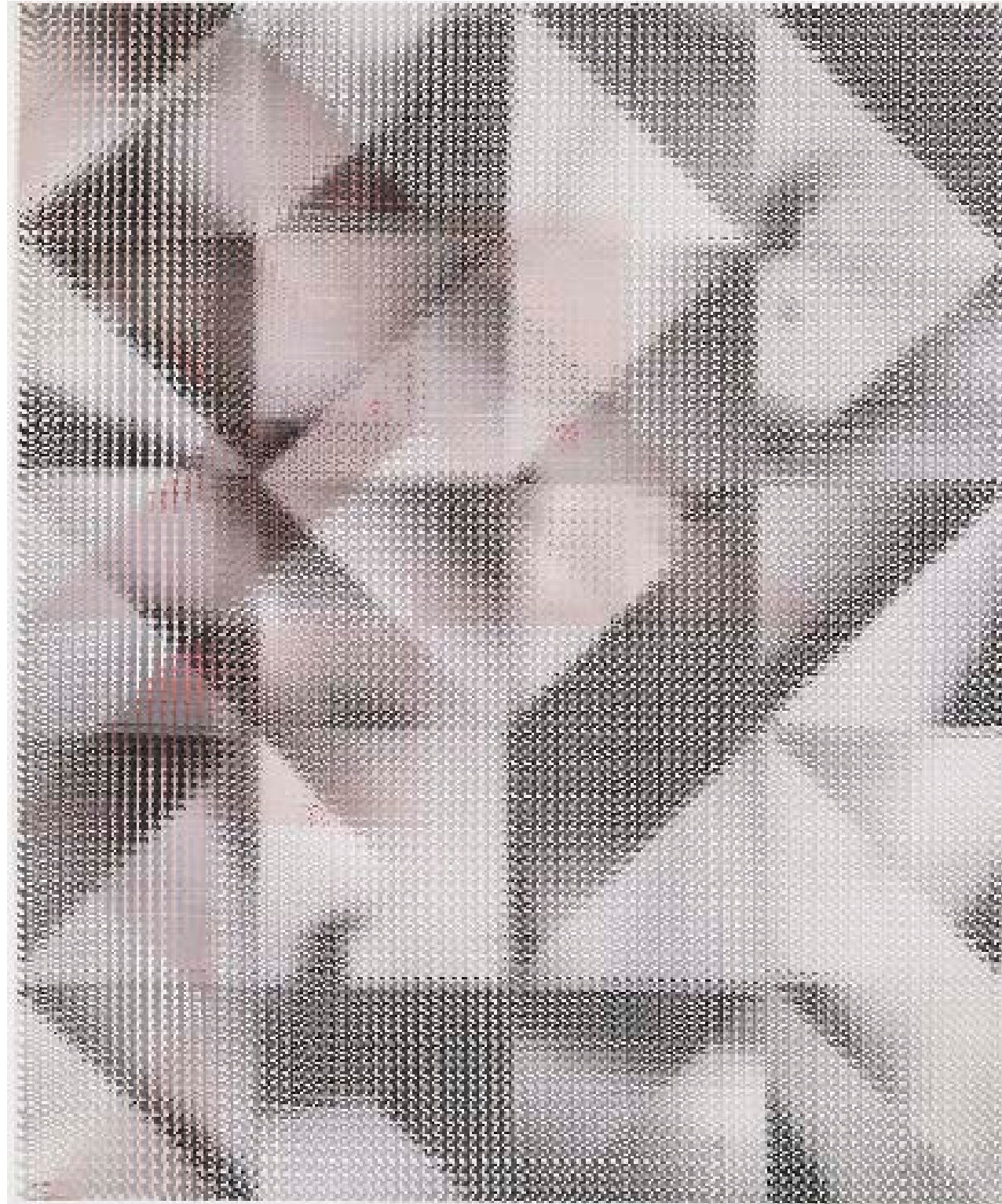




**Sicardi | Ayers | Bacino**

John Sparagana

*Splendid Isolation (Forces at Work)*

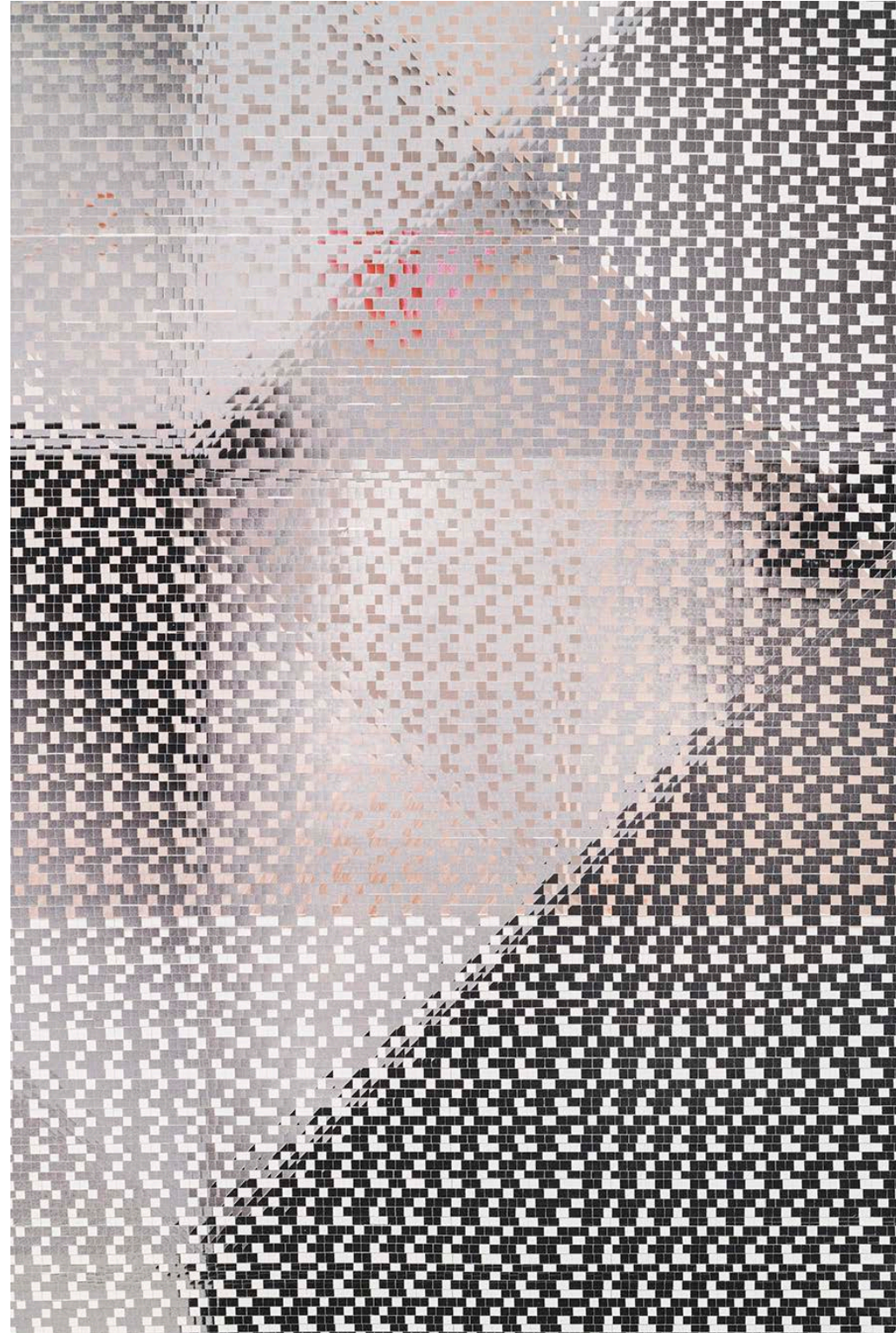


*Splendid Isolation (Forces at Work)*  
*Summer/Fall/Winter 2020 #25, 2020*  
Sliced and mixed printed matter on paper  
54 1/2 x 45 in.

**Sicardi | Ayers | Bacino**

John Sparagana

*Splendid Isolation (Forces at Work)*

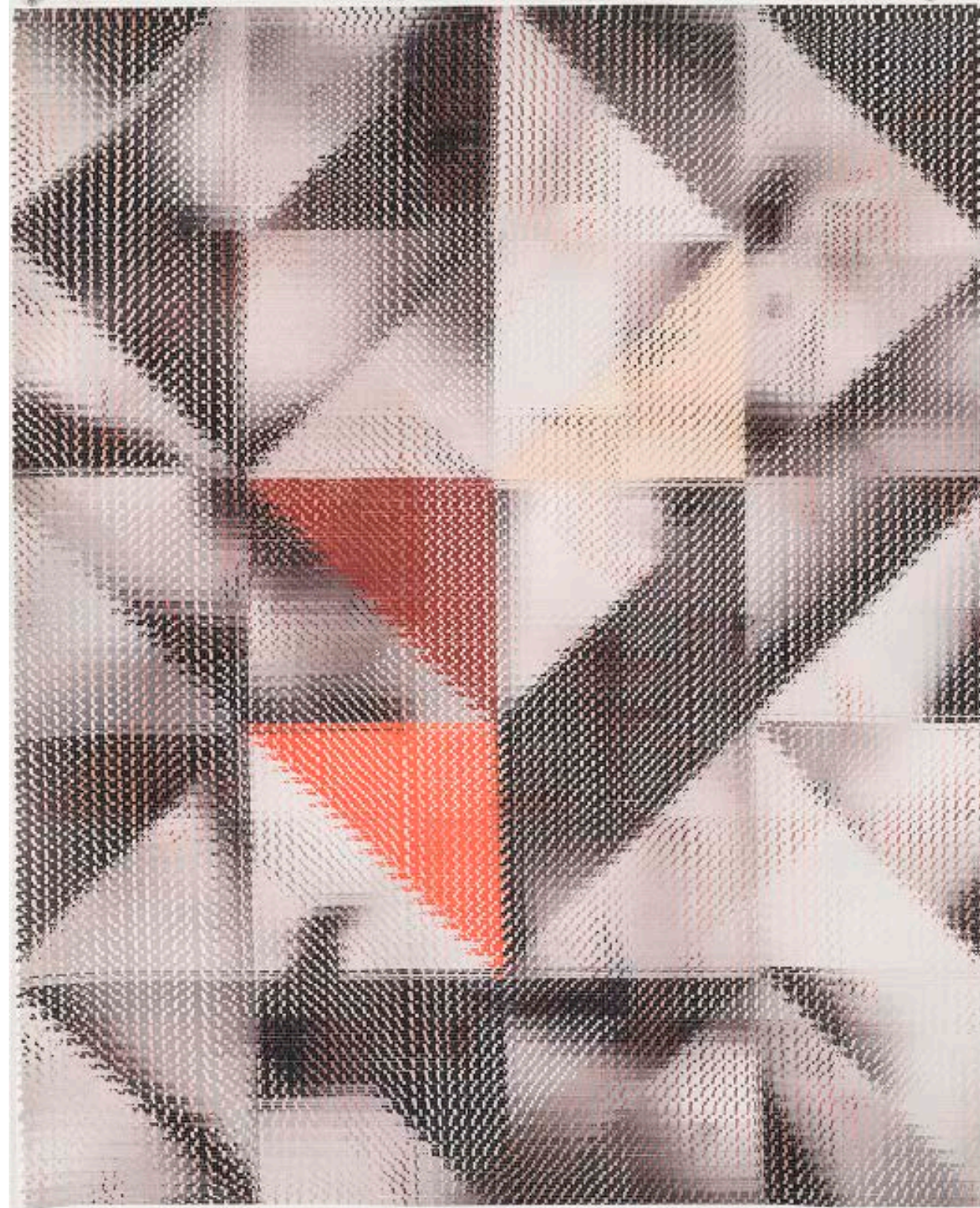


*(detail)*

**Sicardi | Ayers | Bacino**

John Sparagana

*Splendid Isolation (Forces at Work)*

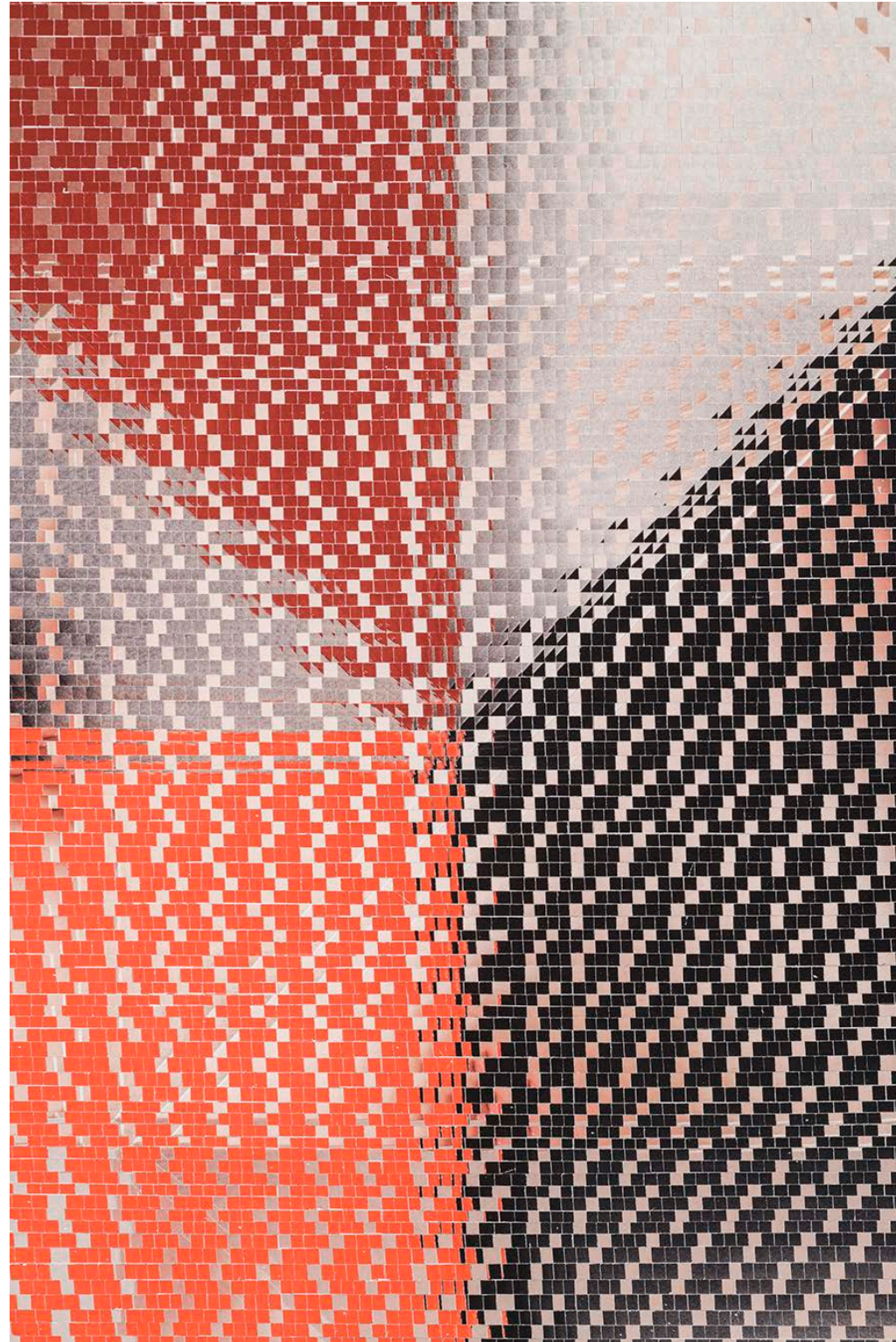


*Splendid Isolation (Forces at Work)*  
*Summer/Fall/Winter 2020 #24, 2020*  
Sliced and mixed printed matter on paper  
55 3/4 x 45 in.

**Sicardi | Ayers | Bacino**

John Sparagana

*Splendid Isolation (Forces at Work)*

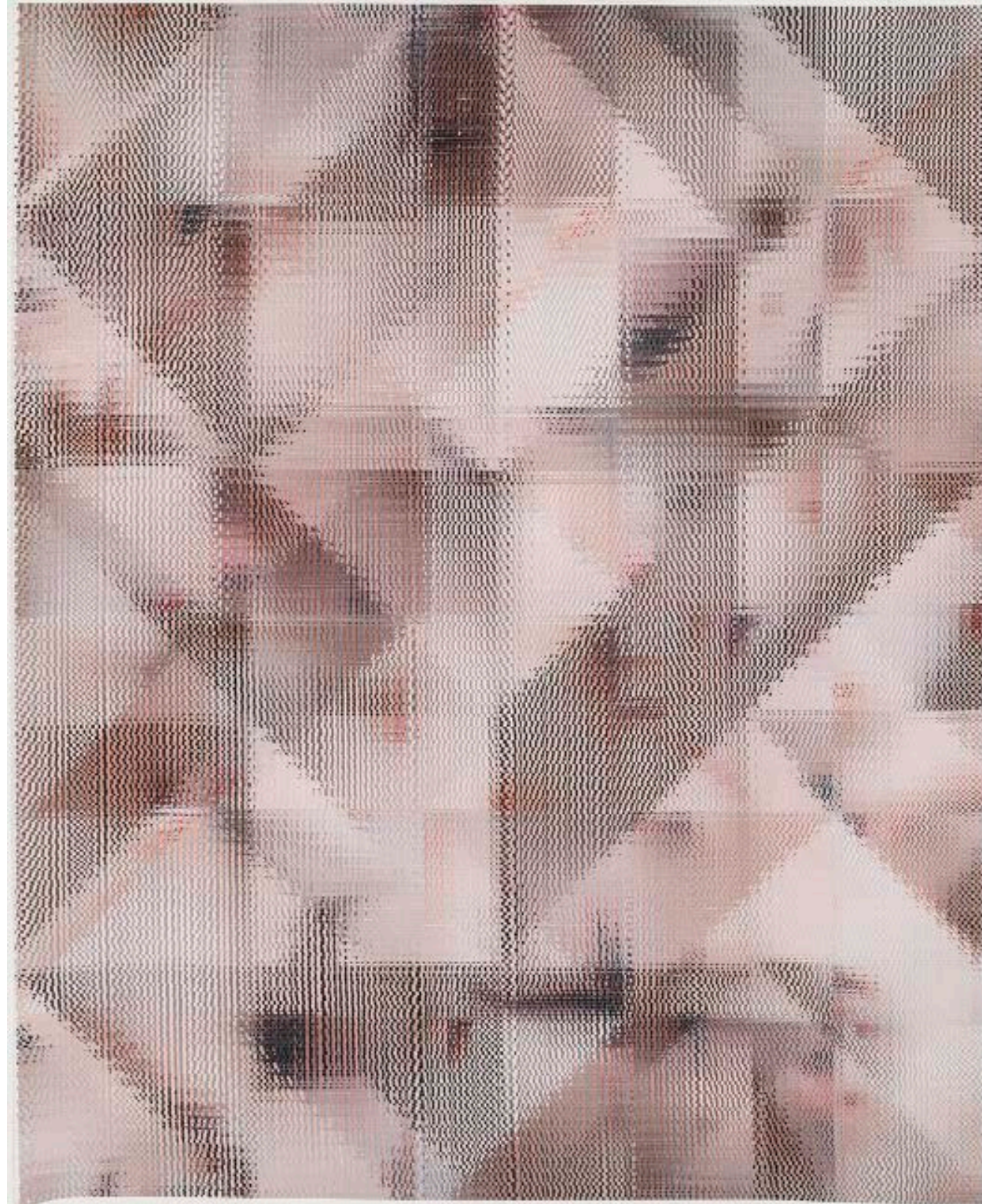


*(detail)*

**Sicardi | Ayers | Bacino**

John Sparagana

*Splendid Isolation (Forces at Work)*

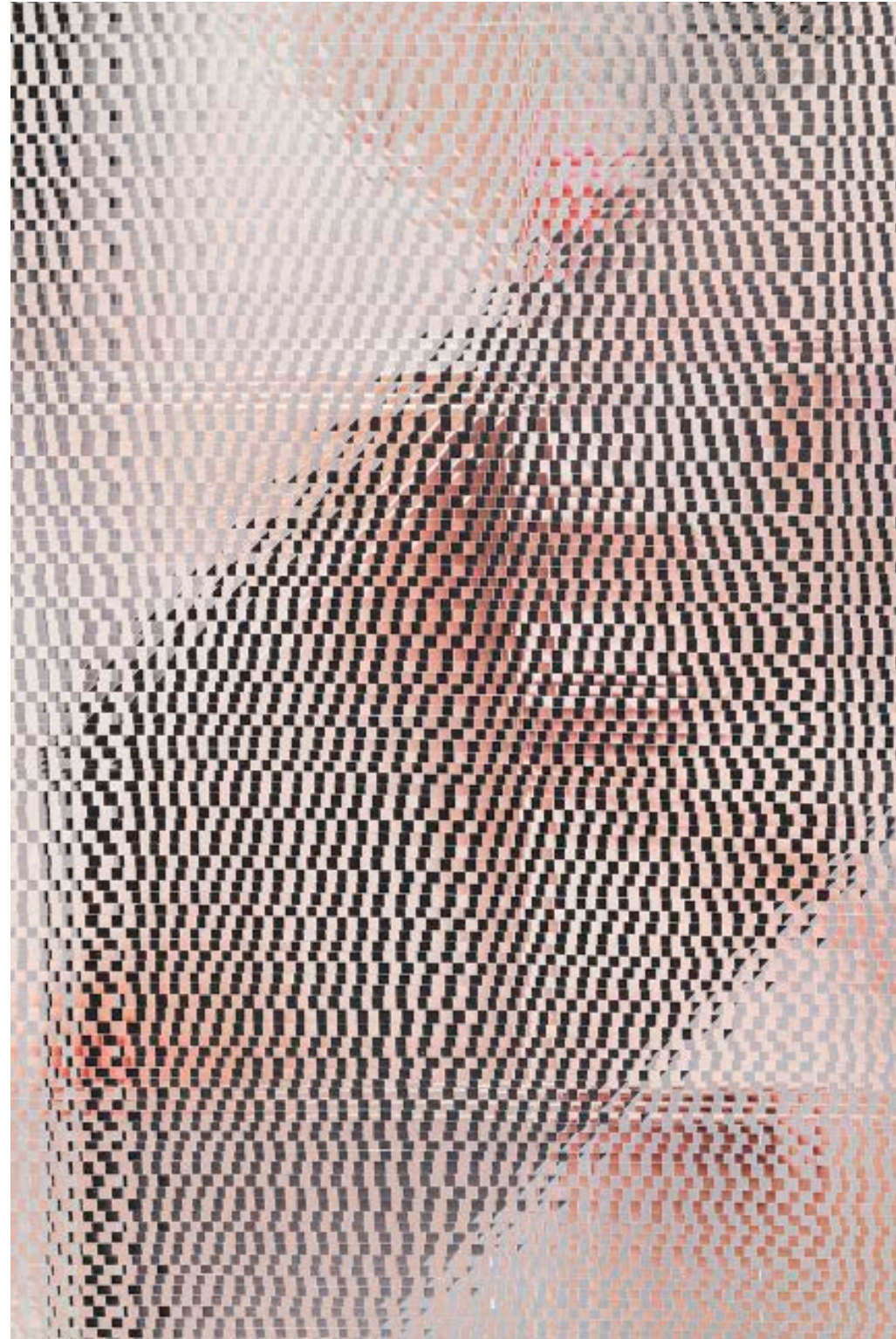


*Splendid Isolation (Forces at Work)*  
*Summer/Fall/Winter 2020 #21, 2020*  
Sliced and mixed printed matter on paper  
55 3/4 x 45 in.

**Sicardi | Ayers | Bacino**

John Sparagana

*Splendid Isolation (Forces at Work)*

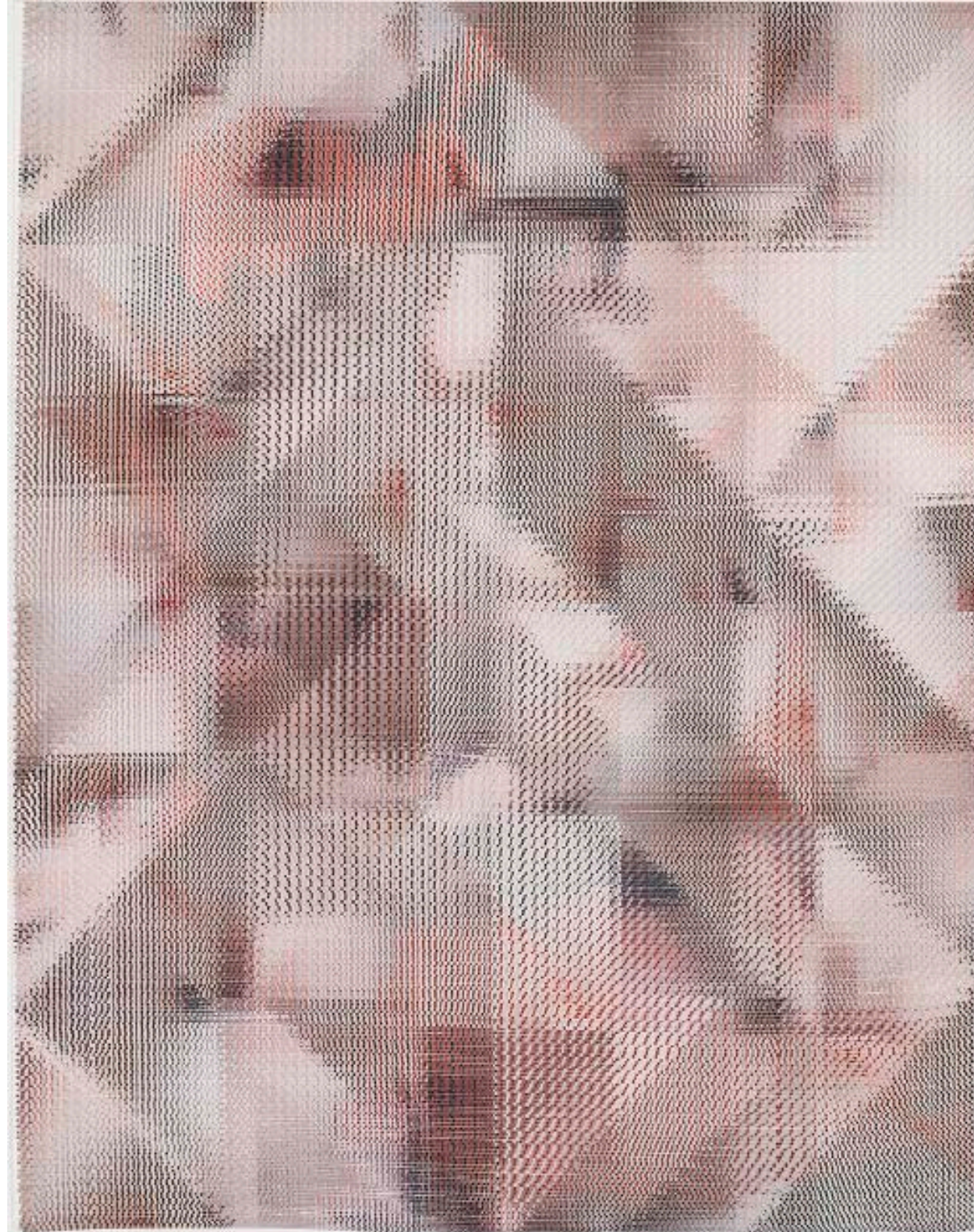


*(detail)*

**Sicardi | Ayers | Bacino**

John Sparagana

*Splendid Isolation (Forces at Work)*

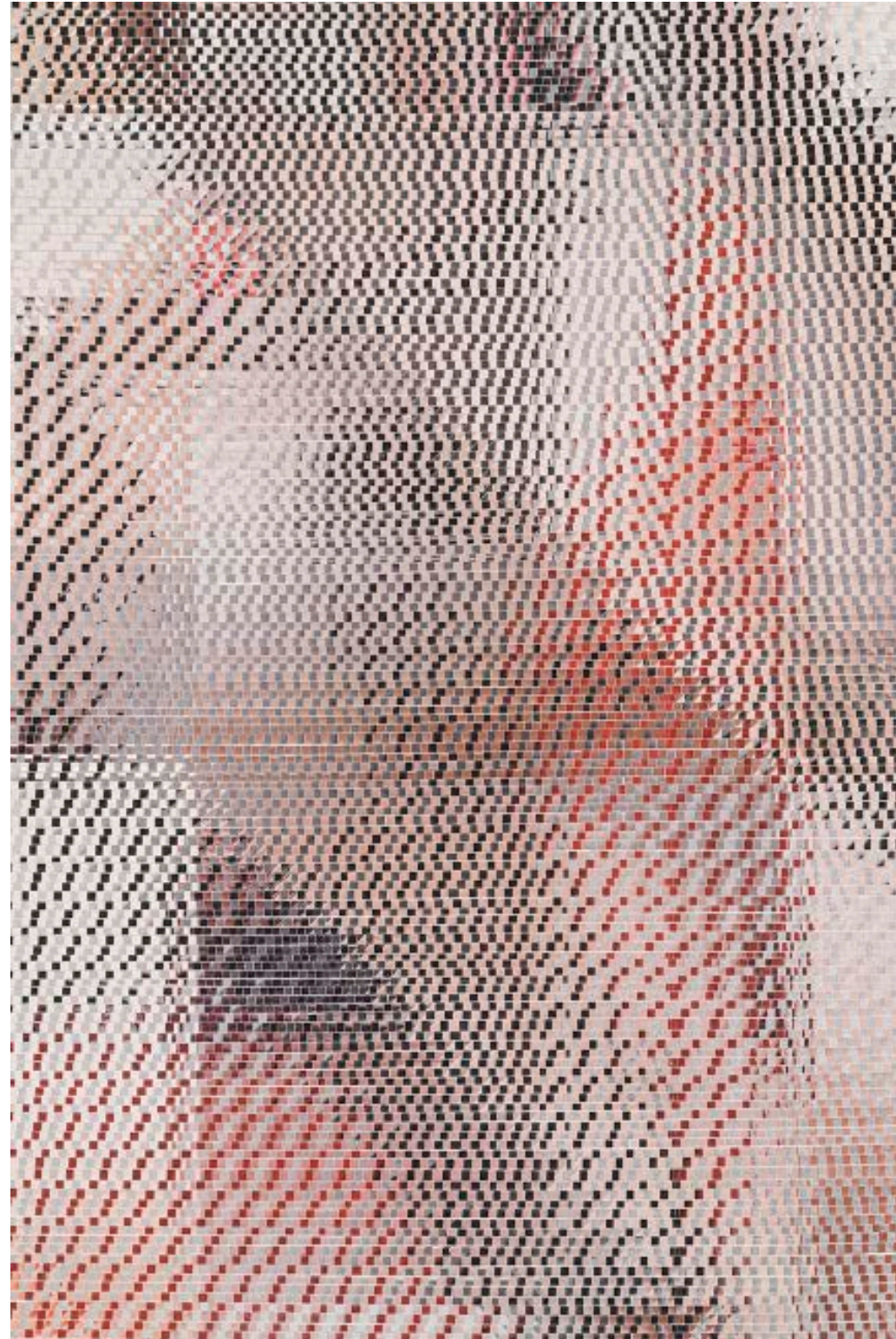


*Splendid Isolation (Forces at Work)*  
*Summer/Fall/Winter 2020 #22, 2020*  
Sliced and mixed printed matter on paper  
57 3/4 x 45 3/8 in.

**Sicardi | Ayers | Bacino**

John Sparagana

*Splendid Isolation (Forces at Work)*



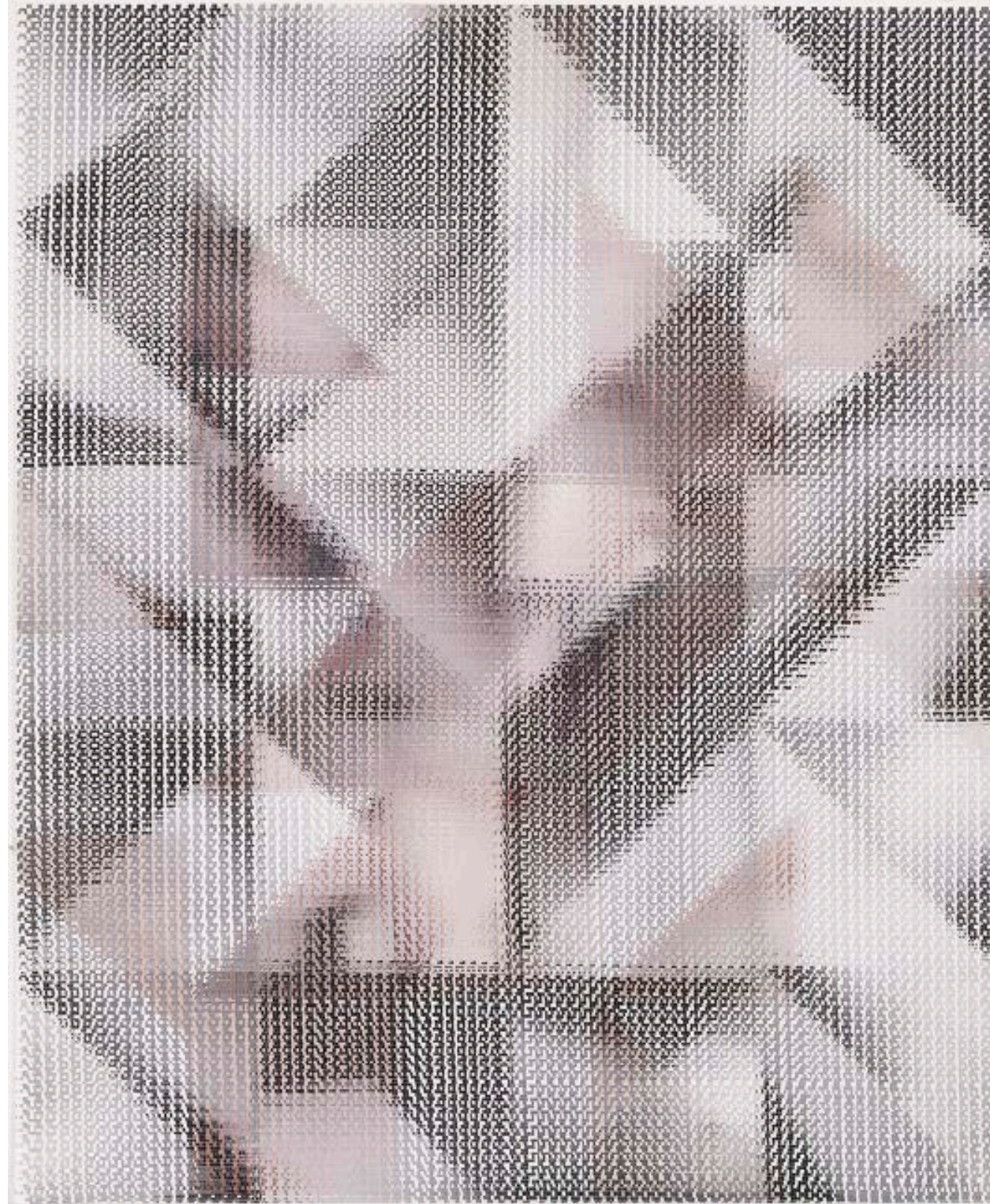
*(detail)*



**Sicardi | Ayers | Bacino**

John Sparagana

*Splendid Isolation (Forces at Work)*

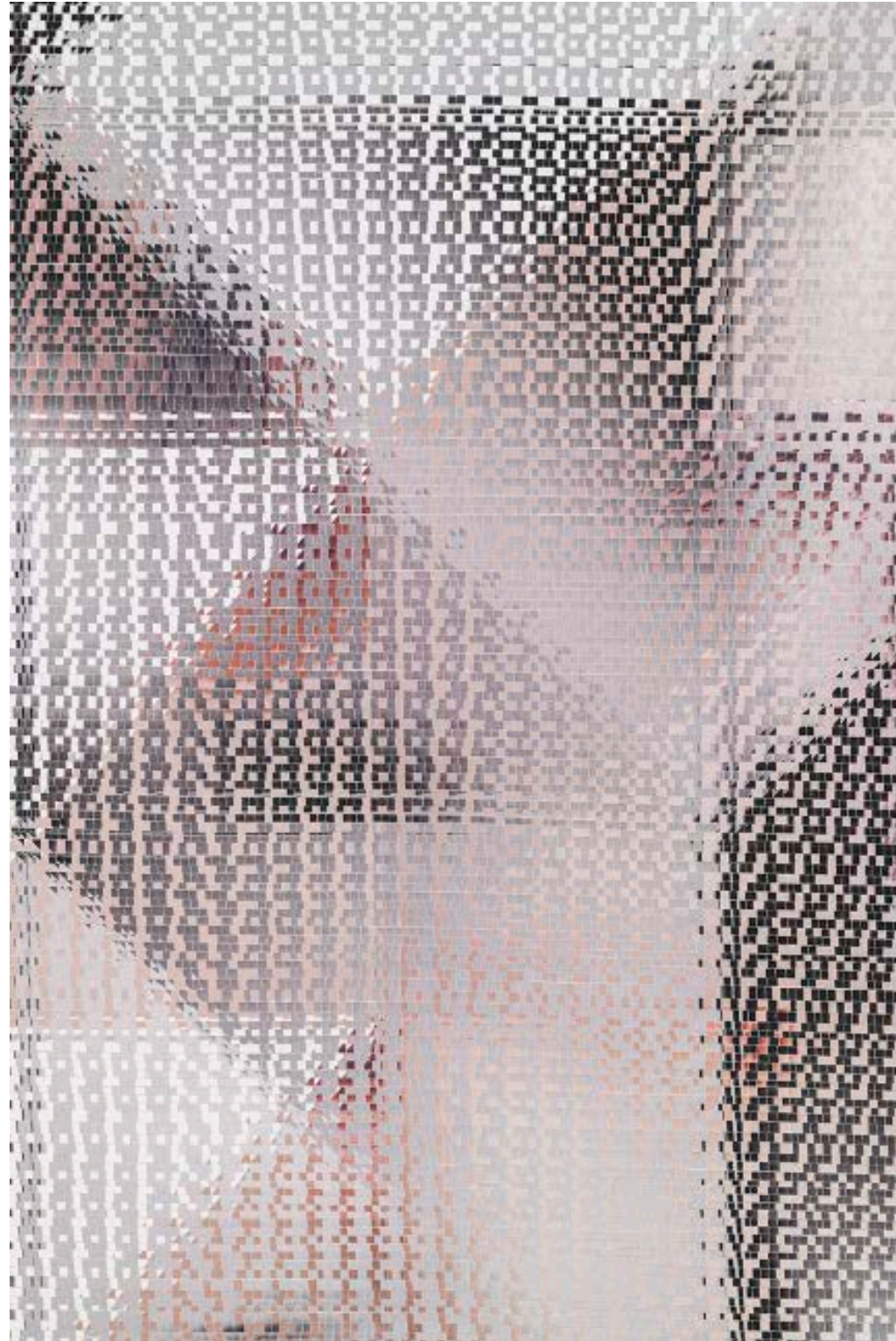


*Splendid Isolation (Forces at Work)*  
*Summer/Fall/Winter 2020 #27, 2020*  
Sliced and mixed printed matter on paper  
55 1/2 x 45 3/8 in.

**Sicardi | Ayers | Bacino**

John Sparagana

*Splendid Isolation (Forces at Work)*



*(detail)*

